



GALAXIE DUO

Your first step in the web screen printing technology...

GALAXIE
DUO



Thanks to its experience in the manufacturing of multi-colors roll to roll silkscreen press with the Galaxie, SMAG expands its range by launching a mono-configuration entrance level machine: **GALAXIE DUO**

THE 3 OBJECTIVES OF THE GALAXIE DUO

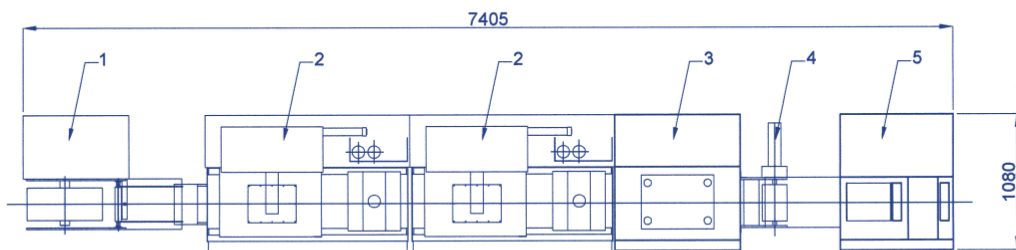
- ▶ Enable the self adhesive labels printers, flexible packaging converters and sheet fed printers to start in the web screen printing process with a productive, reliable and economical solution.
- ▶ Enable to remove production jobs from overbooked existing Galaxie by specializing the Galaxie Duo on 1 or 2 colors + Hot Stamping + Die cutting jobs + smaller productions.
- ▶ Enable to use this machine as a second pass added value machine from reels already printed with offset, letterpress, flexo and digital.

ADVANTAGES OF THE WEB SCREEN TECHNOLOGY

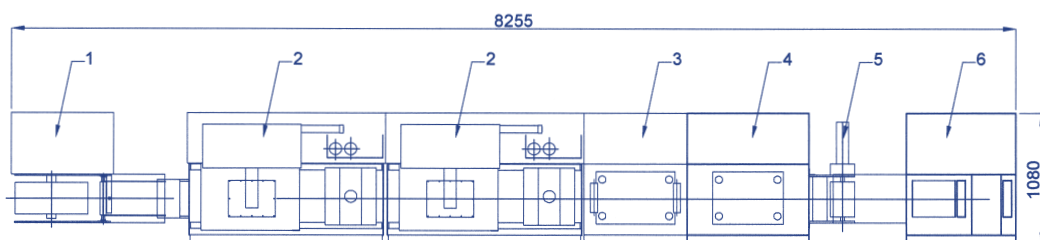
- ▶ **Opacity.**
- ▶ Mechanical, UV and chemical **resistances.**
- ▶ Tactical and sensorial **effects** - special varnish.
- ▶ **Special inks.**
- ▶ **Added value.**
- ▶ Competitive **advantages.**
- ▶ **Open** new markets.

CONFIGURATIONS AVAILABLE

- ▶ **2 configurations single web width 260 mm** (working area 250 mm x 250 mm).



- **Version 1** : 2 colors + Die cutting.



- **Version 2** : 2 colors + Hot stamping + Die cutting.

Guided **tour**

UNWINDER (Version 1 and 2)

- ▶ Mechanical **shaft** diameter 76 mm (3 inches), max roll diameter 600 mm (23 inches).
- ▶ Mechanical **brake**.
- ▶ Mechanical **splicing table** + tape dispenser.
- ▶ **Cell box**.
- ▶ **Vacuum table** at the entrance of the first printing station.

2 SCREEN PRINTING STATIONS (Version 1 and 2)

- ▶ **Movement** of all doctor blades and squeegee assemblies is carried out via compressed air system.
- ▶ **Positions** (start and end) of the printing stroke is adjustable in front of the unit.
- ▶ **Print head vacuum** is activated during print cycle, the air is released during paper infeed.
- ▶ **Second pass sensor** (on the first printing station).
- ▶ **Automatic screen adjustments** (automatic registration) is only available on option.
- ▶ **UV Drying cassette 120 W/cm** with two air exhausts.

HOT STAMPING AND EMBOSSING STATION (Version 2 only)

- ▶ Double toggle press with **4 columns**.
- ▶ **Pressure adjustment system** with a maximum tonnage up to 20 T.
- ▶ **3 ways adjustment system** of the foil plate.
- ▶ **Electrical Heating** - Foil length adjustment system.

FLAT BED DIE CUTTING STATION (Version 1 and 2)

- ▶ Double toggle press with **4 columns**.
- ▶ **Pressure adjustment system** with a maximum tonnage up to 20 T.
- ▶ **3 ways adjustment system** of the die.

NUMERICAL FEEDING STATION (Version 1 and 2)

- ▶ **Programmable numerical feeding device** (accuracy +/- 0,1 mm according to materials).
- ▶ **Control front panel** located on the top of the die cutting station.
- ▶ **Feeding drum** diameter 200 mm (7,87 Inches).
- ▶ **Nip rollers**.

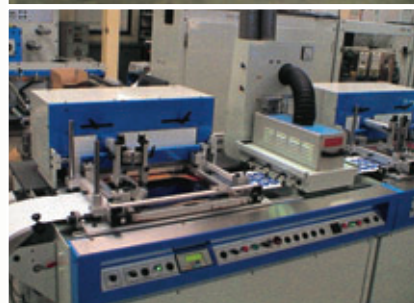
SLITTER WASTE REWINDER

- ▶ **Cell box**.
- ▶ **One mechanical rewinding shaft**, (diameter 76 mm / 3 inches) with adjustable tension.
- ▶ **Slitting unit** with shear knives.
- ▶ **Heating table**.
- ▶ **Counting sensor**.

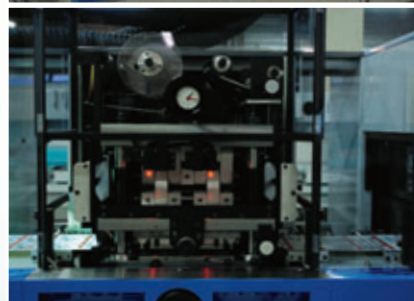
Unwinder.



Screen printing station.



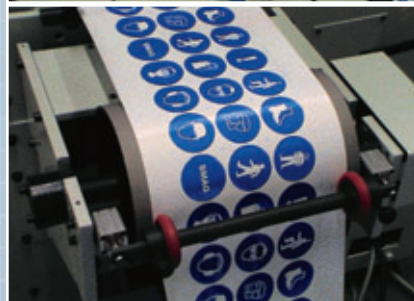
Hot stamping and embossing station.



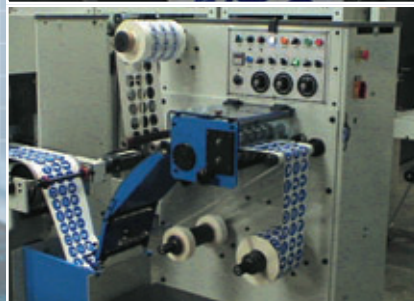
Flat bed die cutting station.



Numerical feeding station.



Slitter waste rewinder.



GALAXIE DUO

Options

AUTOMATIC REGISTRATION OPTION INCLUDING:

- ▶ one hole punching unit,
- ▶ sensor on the die cutting unit,
- ▶ sensors on each printing units with motorization of the length screens adjustment.

OPTION CLEAR ON CLEAR INCLUDING:

- ▶ sensors which are able to read clear material on each cell box,
- ▶ antistatic bars on each print head,
- ▶ special clear counter on the rewinder (the automatic registration option must be added previously to install this option).

LAMINATING UNIT

OTHER OPTIONS

- ▶ Pnéumatical shafts on unwinder and rewinder unit ;
- ▶ 2 rewinding shafts instead of one ;
- ▶ Magnetic basis for the die cutting station ;
- ▶ Embossing cassette ;
- ▶ Trim blower ;
- ▶ Roll lifter ;
- ▶ Plates trolley ;
- ▶ Extra squeegee and flood bar assembly ;
- ▶ Infra Red cassette ;
- ▶ Squeegee sharpener.



Technical specifications

CE AND UL CONFORMITY

	Galaxie Duo
Number of printing stations	2
Max web width	260 mm (10 inches)
Max working area (print /Die/Foil)	250 mm x 250 mm (9 17/20 x 9 17 /20 inches)
Thickness of the steel rule dies	12 mm (1/2 inches)
Thickness of the magnetic plate (die)	0,44 mm or 1 mm
Thickness of the foil plate	7 mm (11/40 inches)
Max. roll diameter (unwinder)	600 mm (23,62 inches)
Max. roll diameter (rewinder)	480 mm (18 9/10 inches)
Angle of the squeegee	20 to 45°
Feeding device precision (according to the type of material)	+/- 0,1 mm
Speed (according to printing stroke)	2200 IPH with a stroke of 250 mm
Electrical requirements (version 1)	380 V tri + N - 20 KW
Electrical requirements (version 2)	380 V tri + N - 25 KW
Compressed air requirements	6 bars § 30 Nm ³ /h
Floor dimensions (version 1)	L 7,4 m x 1,1 m
Floor dimensions (version 2)	L 8,3 m x 1,1 m

